

Different siloplants from our our series:



Kunstmühle Weiß, Bruckmühl



Storehouse, Geinberg



Shinga brewery, Bangkok



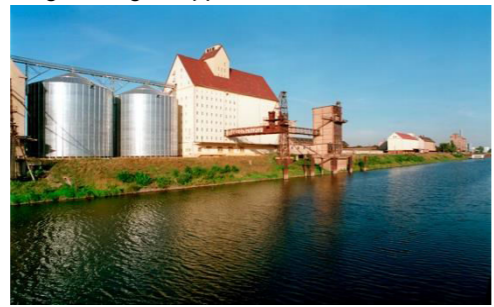
Biogasanlage Krippelna



Malzfabrik, Riedenburg



Storehouse Metz, Haag (Österreich)



Hallische Getreide, Halle 2x 5000 to



Drying stock, Steinfeld, Pöhlking



Raiffeisen Storehouse, Essenbach

Bestrebt unsere Erzeugnisse ständig zu verbessern, behalten wir uns das Recht vor, Änderungen ohne vorherige Benachrichtigung vorzunehmen. Der Lieferumfang ergibt sich ausschließlich aus Ihrem Auftrag, SA 0814

Romberger®-

Drying plant and grain silo



Landwirtschaftliches Lagerhaus Erhardt GmbH

- Input power 2x 150to/h
- Capacity silo 8x 1500to and 6x 480to
- Conveyor performance input 2x150to/h and Output 150to/h
- Conveyor performance for drying plant 70to/h
- Drying plant 12to/h corn und 40to/h grain
- Plant construction and conveyor technology from Romberger GmbH
- Silo and runway delivered by Neuero GmbH



Maschinenfabrik GmbH
 Triftener Str. 54 · D-84371 Anzenkirchen
 Tel. +49(0)8562/208-0 · Fax 208-11
 E-Mail: mail@romberger.de
 Internet: www.romberger.de



Different views of the agricultural warehouse Erhardt:



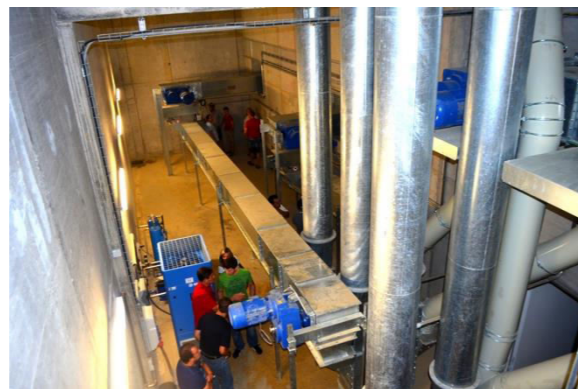
Silo runway width 2m and 2,5m



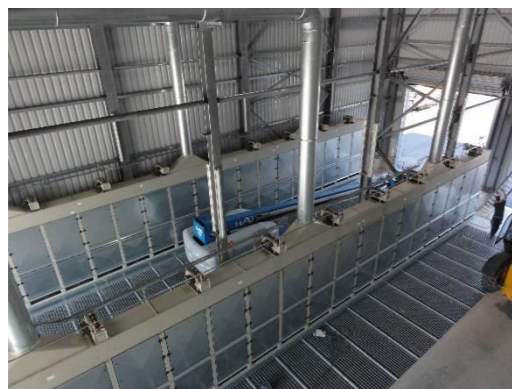
View drying plant and silo



Drying plant



Input- and linkage chain conveyor with bucket elevator














Dedusting



Input hall and silos

Output from the company Romberger

-  Planing of the plant according to customer requirements
-  Complete delivery of the plant except for concrete and hall construction
-  Production and delivery of the complete conveyor technology
-  Production and delivery of the drying plant
-  Complete installation of the entire plant
-  Electricity distribution including low-voltage main distribution
-  Electrical installation with wiring
-  Control cabinet with SLS, plant communication via Profi and ASI Bus
-  Operation of the plant via a visualization system
-  Complete silo temperature monitoring with logging
-  Grain aeration and cooling

